

# LIGHT WORKS

MICHAEL O'DONNELL

.....so instead of cutting into the object to produce a form -shape-symbol made of empty space, I decided to fragment the emptiness further by projecting the form-shape-symbol from the object via light. Suddenly the studio was a different place, its grey workshop interior that I know so well, having built it and worked in it almost every day for the past eight years, was transformed into a relit, warming fairground of visual excitement - equivalent to a good church at midnight on Christmas Eve. This was getting dangerous - soft lights - sweet music next - until by chance the local electrical warehouse sold me some spotlight bulbs of 60 watts strength, going under the dubious name of «disco bulbs» with a name like that they deserved at least one quick trial

So a flag shape made up of brown metal slats hung on the wall had its own heralding yellow disco lights installed, in went the plug and 1920 watts went into action. These globes of golden yellow have an effective lighting area of 25 degrees, so when out of that beam they aren't up to very much - but what I wasn't aware of was that a shaft of yellow cross sculpture light was blazing its way out of the studio window, across the garden, through the french windows at the front of the house - demolishing the kitchen, escaping out of the corresponding french windows at the back of the house, screaming through the forest, in which the house nestles, and off running down the valley to be lost forever - and certainly laying claim to being the longest sculpture I've ever made.

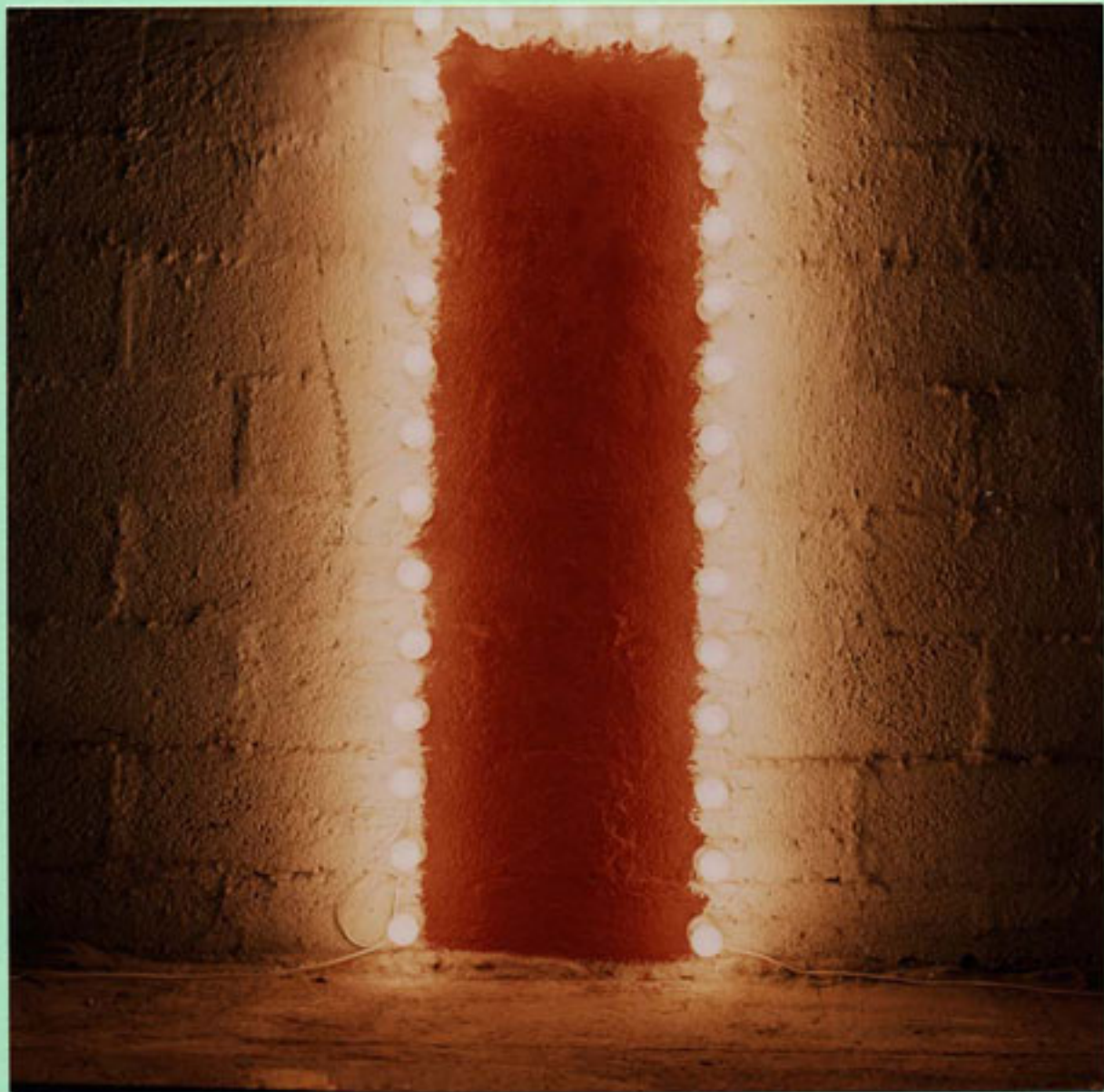
**YELLOW CROSS**  
**PHOTO 150 X 150CM**  
**1993**



**YELLOW FLAG  
SPOTLIGHTS ON STEEL  
HERSLEBSGT.10.OSLO  
1994**



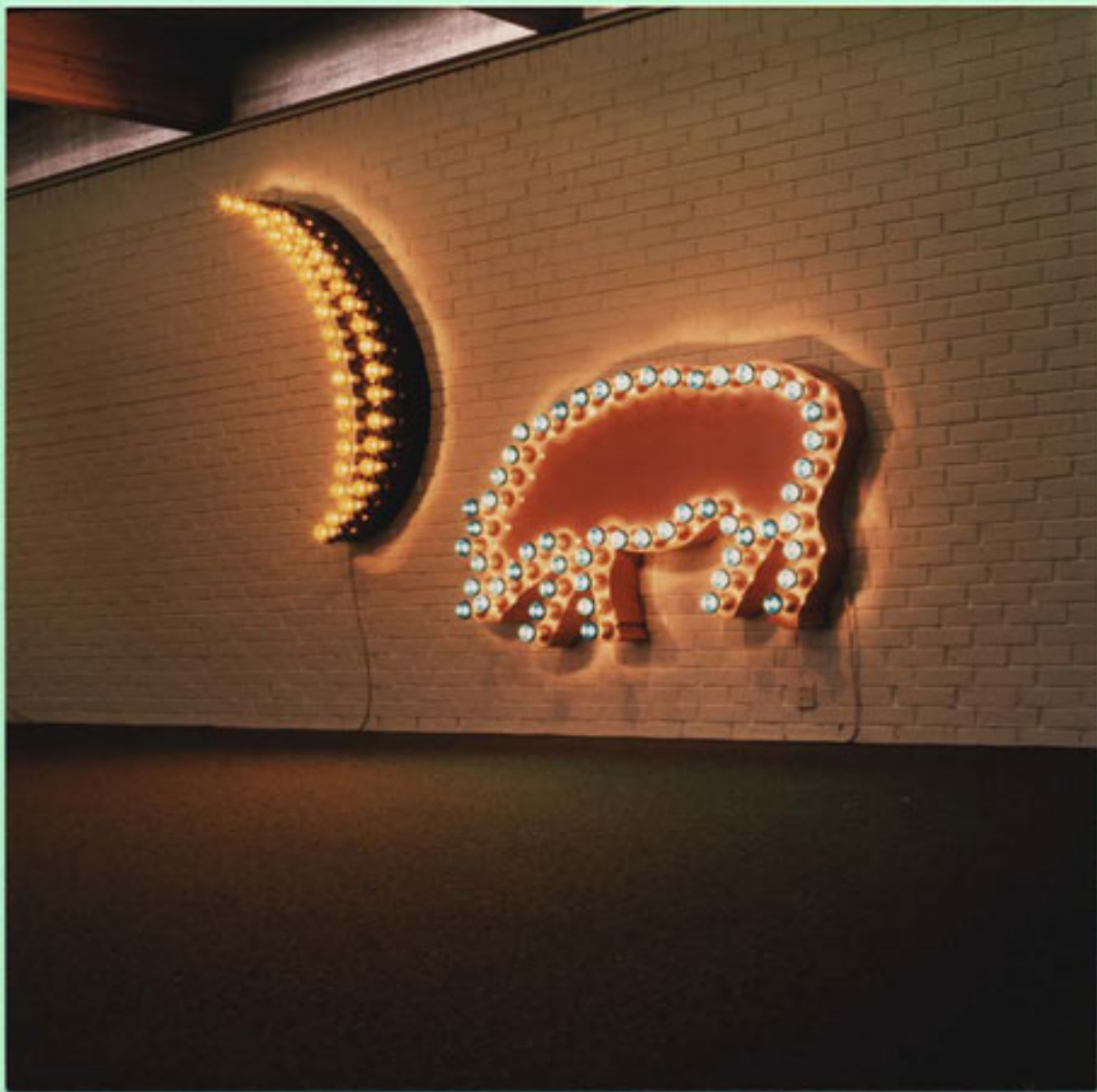
**DOOR (STUDIO VERSION)**  
**PAINT, LIGHTBULBS**  
**190 X70 CM**  
**1994**



**SMALL FRAME  
SPOTLIGHTS ON STEEL  
180 X 60 CM  
LIGHT AS METAPHOR,  
DEN HAAG 1995**



**PIG AND MOON**  
**SPOTLIGHTS ON STEEL**  
**250 X 200 CM**  
**STAVANGER KUNSTFORENING**  
**1994**



**LIFE BOYS**  
**CAST STONE SPOTLIGHTS WAX**  
**240 X 120 X 70 CM**  
**STAVANGER KUNSTFORENING,**  
**1994**

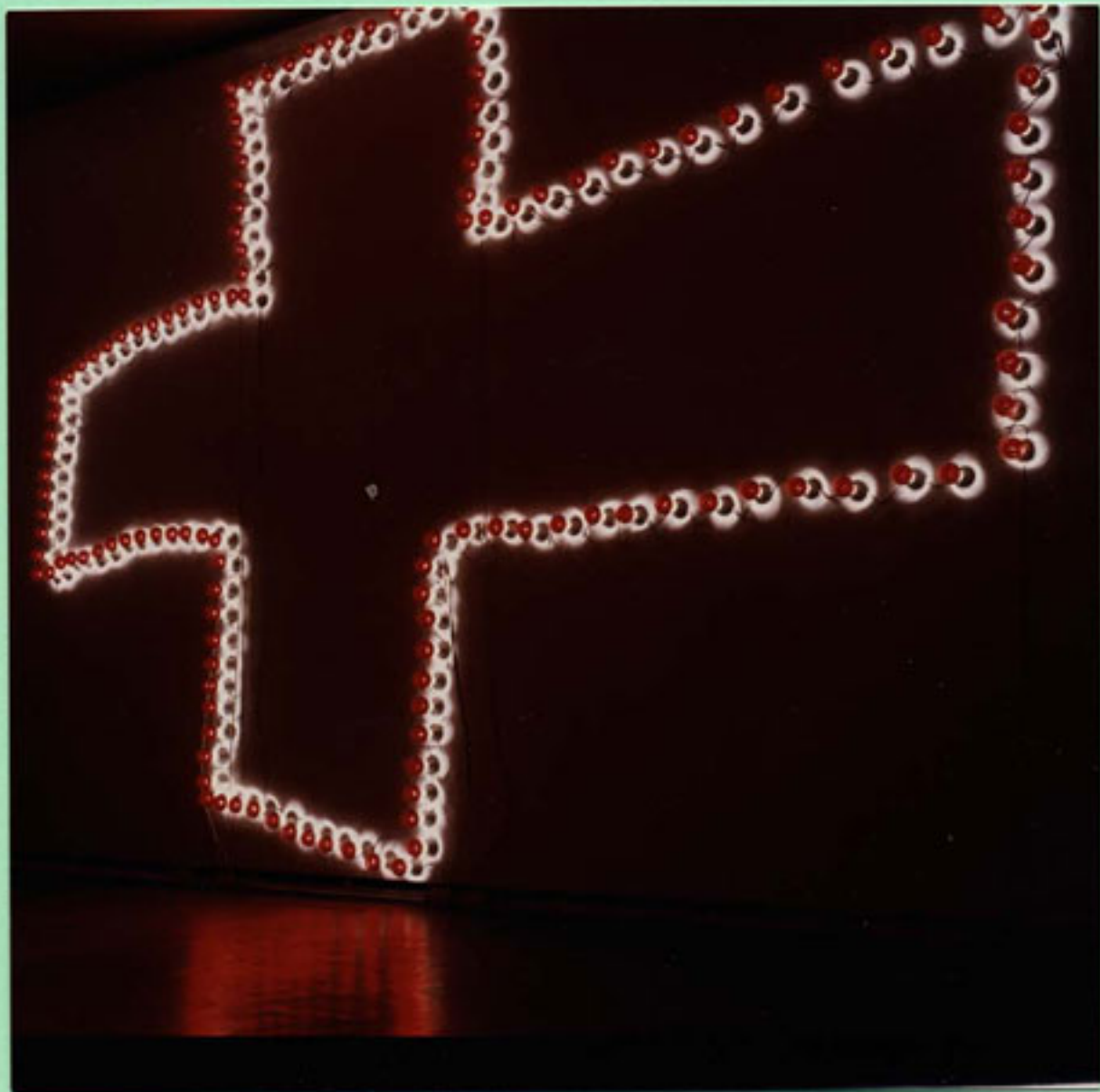




**RED FLAG AND DRUM**  
**LIGHT BULBS STEEL,**  
**CAST STONE**  
250 X 350 X 200 CM  
1994



**RED FLAG, OSLO**  
**9 KW SPOTLIGHTS**  
**500 X 700 CM**  
**MUSEUM OF CONT. ART**  
**OSLO 1994**



**RED FIRE**  
**6KW SPOTLIGHTS,STEEL**  
**300 X 180 X 70CM**  
**P.I.G. PROJECT OSLO 1994**



**BLUE FIRE**  
**6 KW SPOTLIGHTS,STEEL**  
**300 X 180 X 70CM**  
**REFERANCES**  
**MUSEUM OF CONTEMPORARY**  
**ART OSLO 1995**



**2 FLAMES**

**18 KW SPOTLIGHTS, 1 TON WAX**

**10M X 30M X 20M**

**TINFOS NOTODDEN 1994**



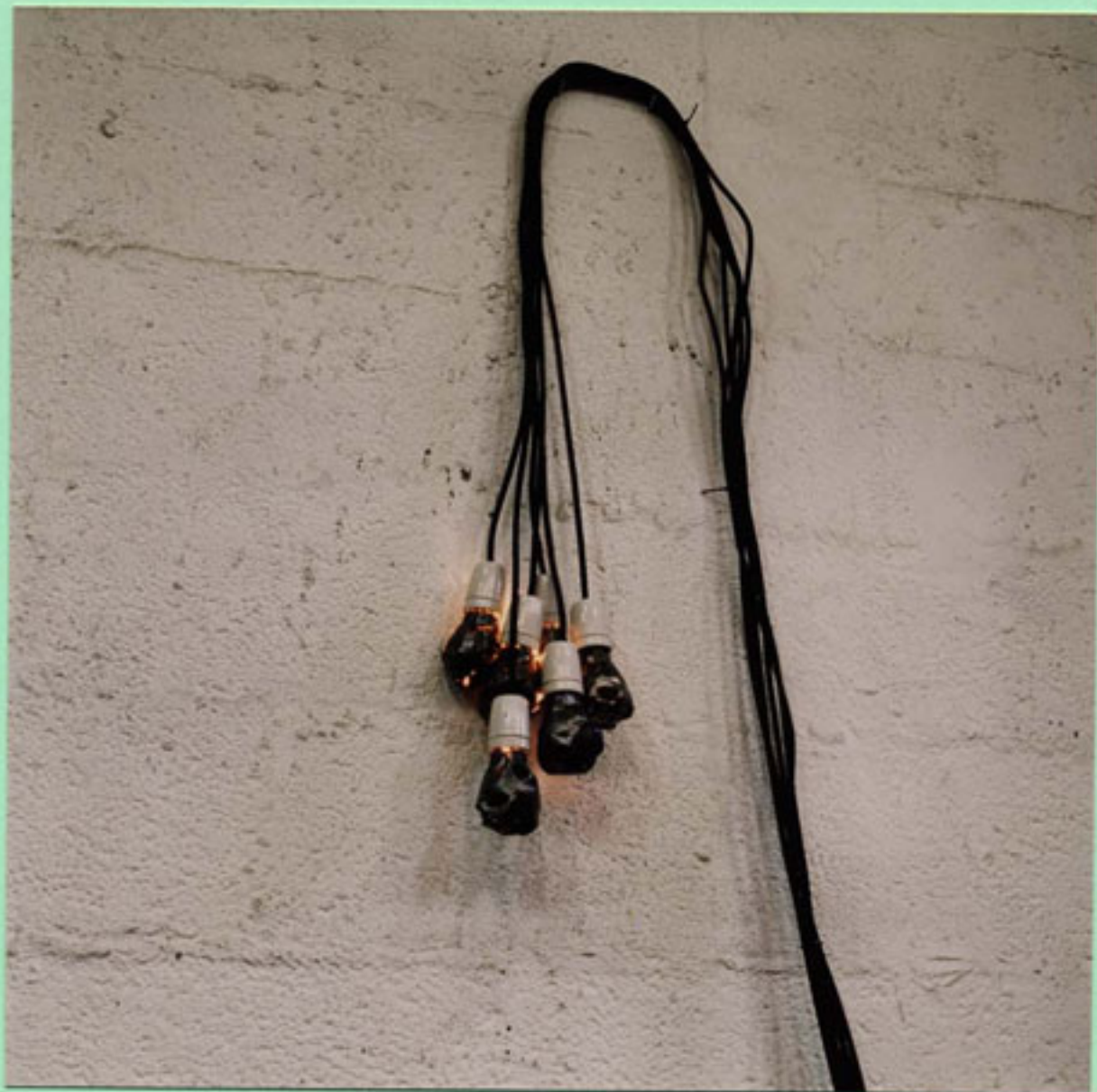
**FIRE**  
**9 KW SPOTLIGHTS, 2 TONS WAX**  
**20M X 20M X 7M**  
**TELEMARKS FYLKES GALLERI**  
**1994**



**FRIDGE**  
**SPOTLIGHTS, CABLE**  
**120 X 60 X 60 CM**  
**1995**



**LEAD BULBS**  
**BULBS,LEAD,FOIL,CABLE**  
**120 X 40 X 20 CM**  
**1995**

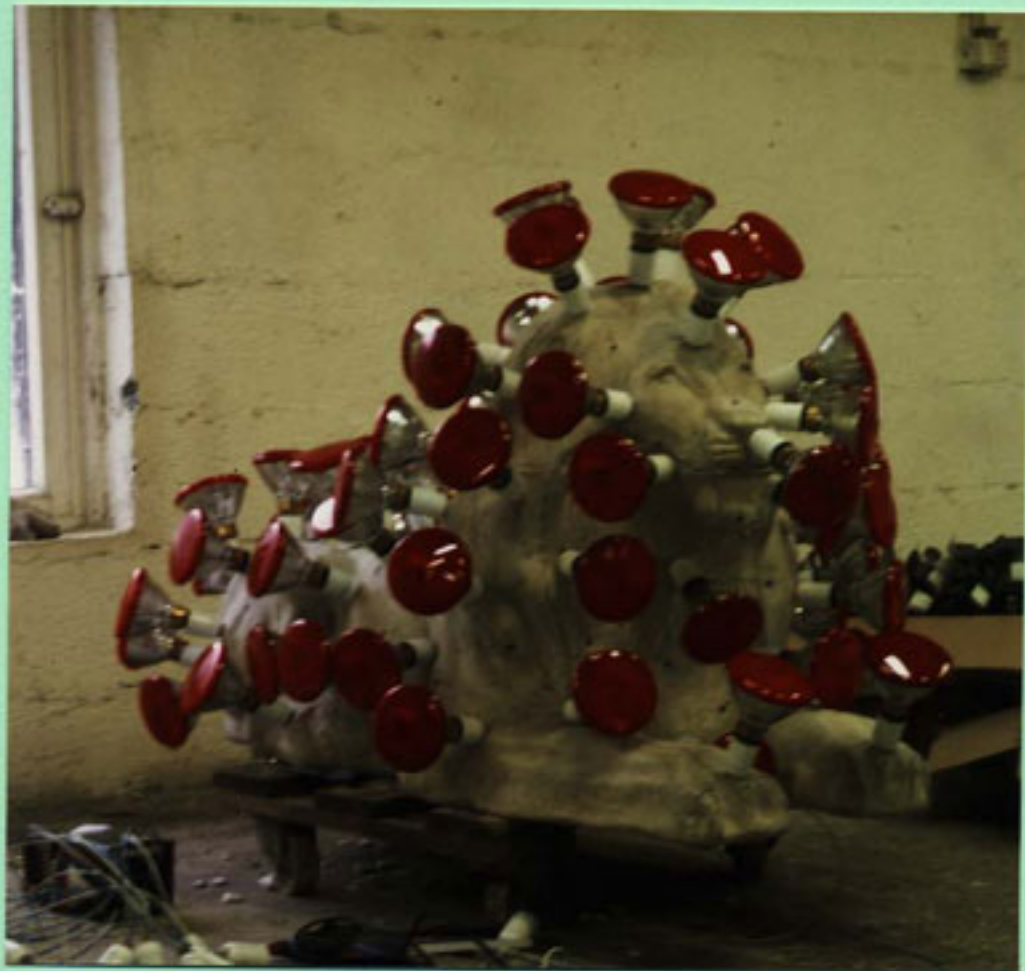




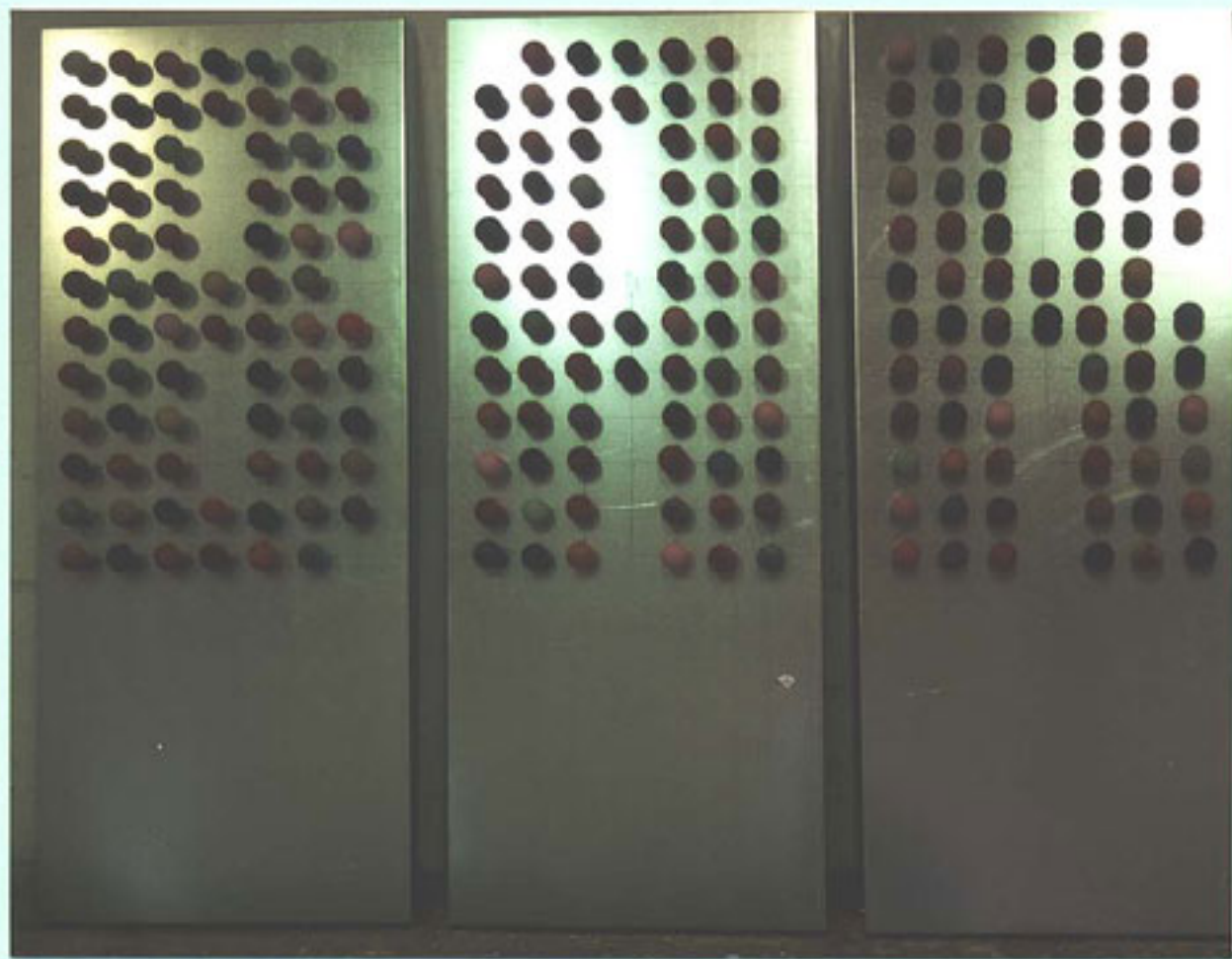
**LIGHT BOX**  
**3 KW SPOTLIGHTS,STEEL**  
**100 X 100 X 100 CM**  
**1995**



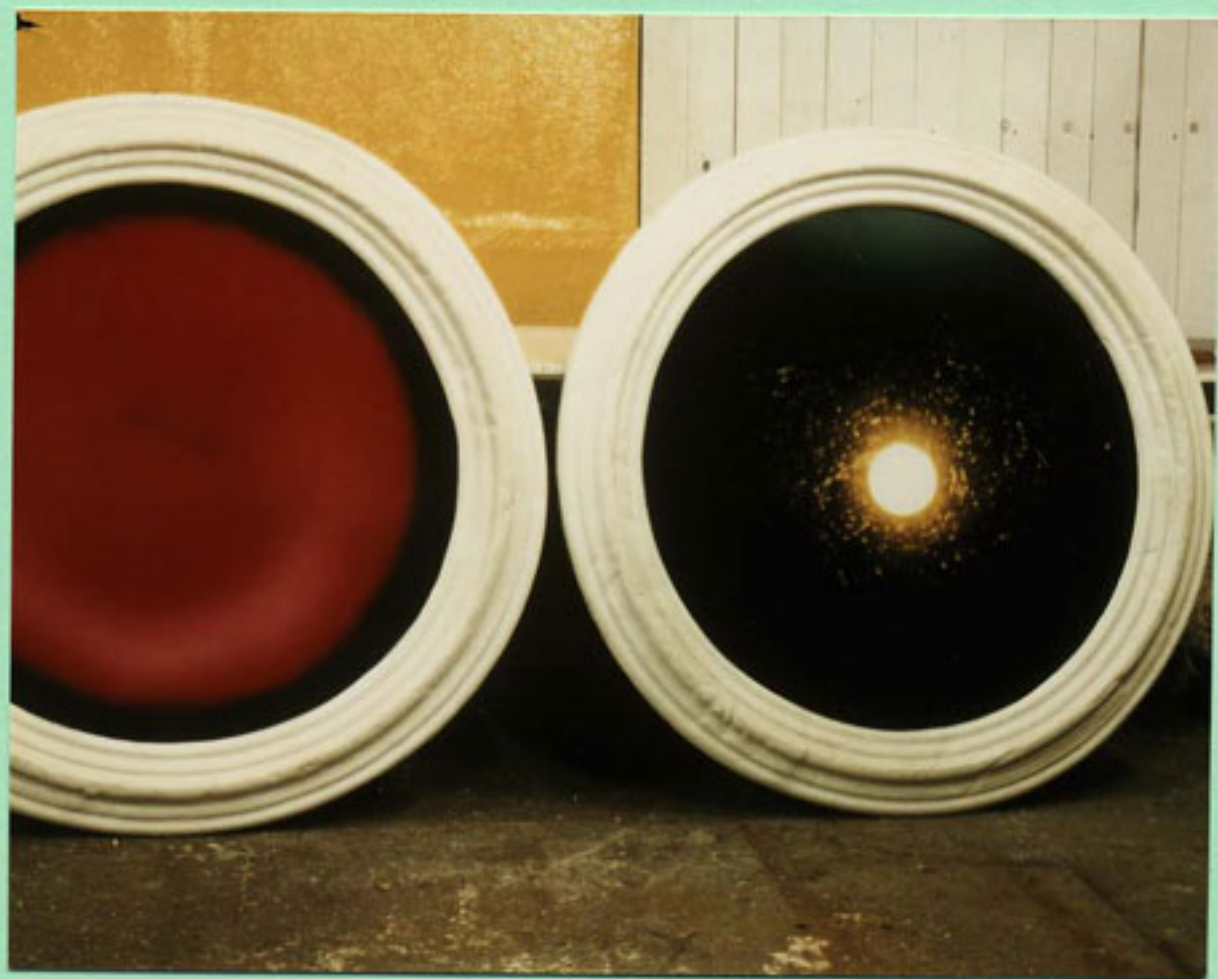
**LUSAKA LION**  
**6KW SPOTLIGHTS, CONCRETE**  
**2M X 1M X 1M**  
**1997**



BAR  
STEEL, WAX  
2M X 3M X 50CM  
1997



**SPOTS**  
**PHOTOS IN STONE FRAMES**  
**125CM DIA. X 15CM**  
**1997**



**POCKET HALO**  
**24 CARAT GOLD PLATE**  
**11CM X 6CM DIA.**  
**1997**

